

## Schindler's BUILT-In Facial Recognition

Make your vertical journey a truly seamless experience





## The next-generation access solution

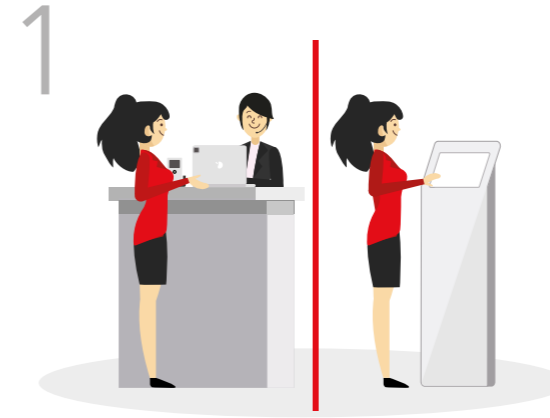
By leveraging biometric artificial intelligence, Built-In Facial Recognition identifies users based on key facial features, offering you a fully seamless experience with Schindler's PORT access terminals and PORT 4 mini-integrated turnstiles.

**Note:** All Pictures shown are for illustration purpose only.  
Actual product may vary due to product enhancement.



## Seamless journey

### Simplify access authentication



User-friendly facial registration

1. Record personal information via reception or self-kiosk.
2. Acknowledge the building's privacy policy.
3. Follow the instructions to activate the user profile.



Easy and effective visitor access

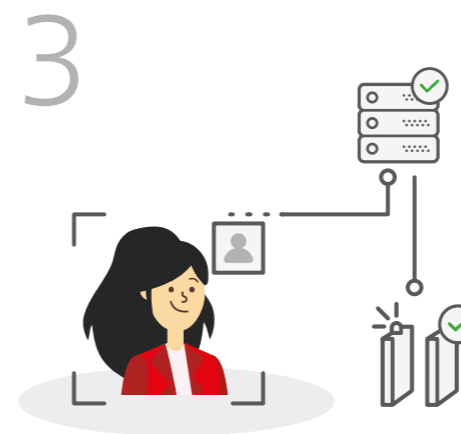
1. Approach to Schindler PORT terminal or turnstile and look into the facial camera.
2. Wait for the camera to capture the faceprint.

## Uplift user convenience

### Facial recognition for elevator access

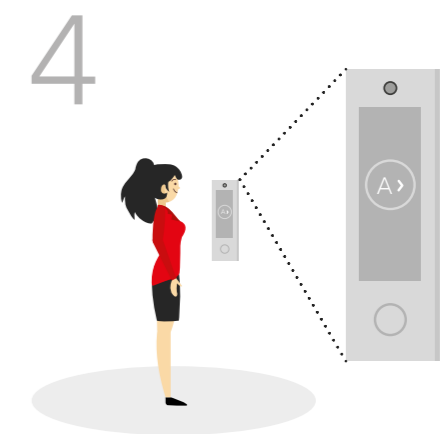
Built-In Facial Recognition reaches new heights in classification accuracy. Its algorithm powers an efficient facial scanning process based on a face-matching methodology that ensures low error rates.

By having their identity and access rights verified and entered into the building's database, a user will be granted access and assigned an elevator to their destination floor without having to search for and swipe an access card.



Instant facial verification

The facial recognition engine searches its database to instantly match your faceprint and profile to verify your access rights.



Seamless vertical travel experience

1. Following the verification, the PORT Terminal automatically displays lift allocation.
2. Walk to the assigned lift for a seamless journey.



PORT 4 terminal with facial recognition

## Authenticity and compatibility

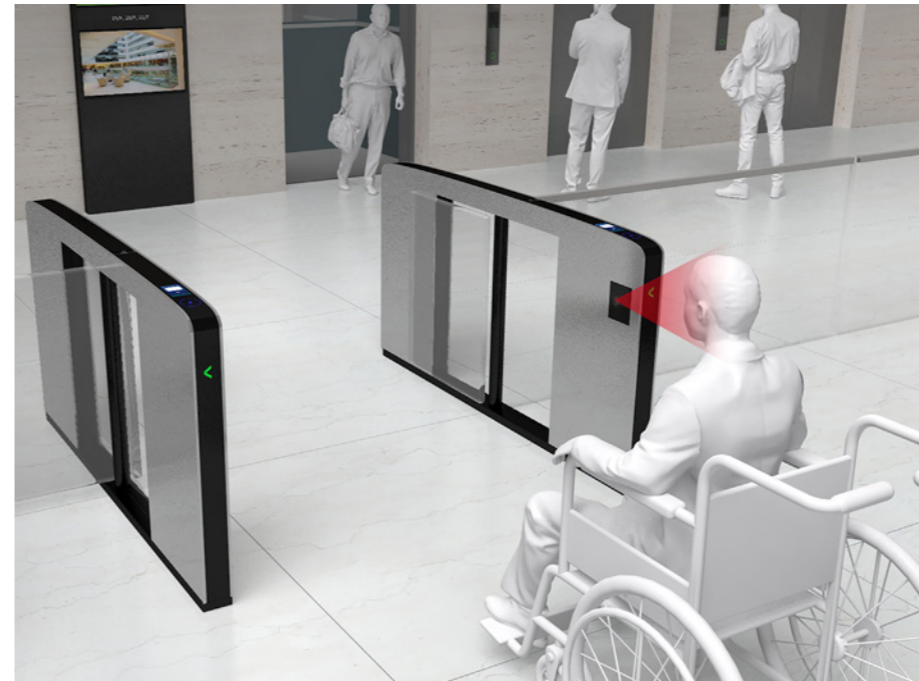
### The beauty of adaptable product designs

Built-In Facial Recognition has revolutionized monitoring and access control by integrating Schindler's Transit Management System with facial recognition systems. It is a proprietary Schindler solution that comprises one or more facial engines, facial cameras on PORT 4-mini-integrated turnstiles and PORT terminals, and the complementary Built-In Visitor Management System.



### Concealed design

The PORT 4 mini-integrated turnstile combines access control and transit intelligence, creating a forward-thinking and elegant access solution. Unobtrusive, the facial camera is hidden in the centre of the turnstile.



### Equal access

Built-In Facial Recognition is designed for accessibility and to suit everyone's needs. A better user experience is achieved with the unique installation introduced to the PORT 4 mini-integrated turnstile.



### Versatile with Built-In QR

Built-In Facial Recognition allows all-in-one integration with Built-In QR to provide a holistic dual access solution. Download the 'Built-In QR' app on Apple Store or Google Play..





## Accelerate building operation efficiency and support data security

An effective visitor management system is essential to building management as it helps keep track of visitors and enhance safety and security. To this end, a centralized database plays an important part by processing large volumes of visitor data originating from different sources.

The Built-In Visitor Management System (VMS)'s powerful features were future-proofed to face any operational challenges. The system's flexibility notably allows for scalable integration, be it now or in the future. Built-In VMS also enables building operators to streamline long registration processes and mitigate reluctant surveillance procedures on individual access control systems.

VMS feature(s):

User registration



Face Registration



Passenger report



Badge management



Generate QR code



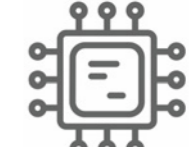
User list



ID scan



System integration



Installation(s)

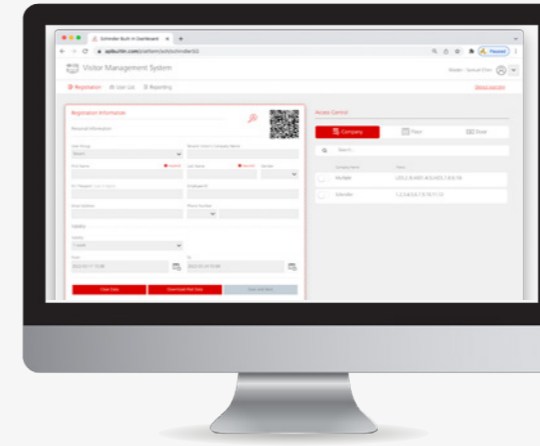




## Real-time monitoring and reporting

### Effective tenant and visitor management

Built-In Visitor Management System (VMS) is an all-in-one data management platform that enables building operators to create user access profiles, facilitate facial enrolment and generate QR codes. Operators can effectively track and analyse traffic and produce comprehensive reports on the movements of visitors throughout the building. The platform is designed for multiple channels and is mobile-enabled.

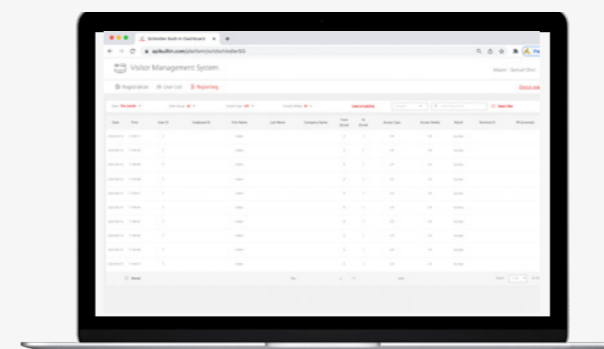
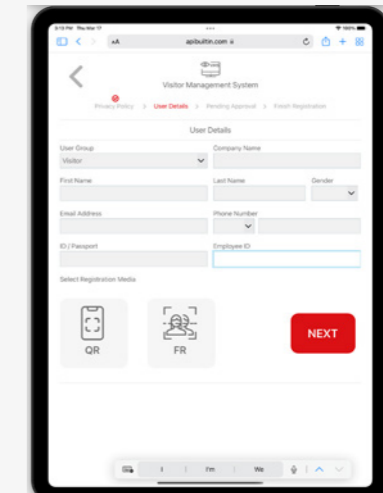


### 01 User Registration

Building management can conveniently register user profiles and grant access rights to individual visitors or groups of tenants according to their specific requirements through Built-In VMS's user-friendly interface.

### 02 User's Access Type(s)

Built-In VMS can synchronise the respective access databases of Schindler Transit Management System and other integrated access applications such as FR/ QR, enabling the consolidated analysis of passenger flows for further optimisation.



### 03 User List & Reporting

Built-In VMS allows building management to generate up-to-date and comprehensive reports on the movements of visitors throughout the building. The report format can be customized and extracted in a Comma-Separated Values (CSV) format.

# Closed-loop circulation

## Safekeeping personal data on premises

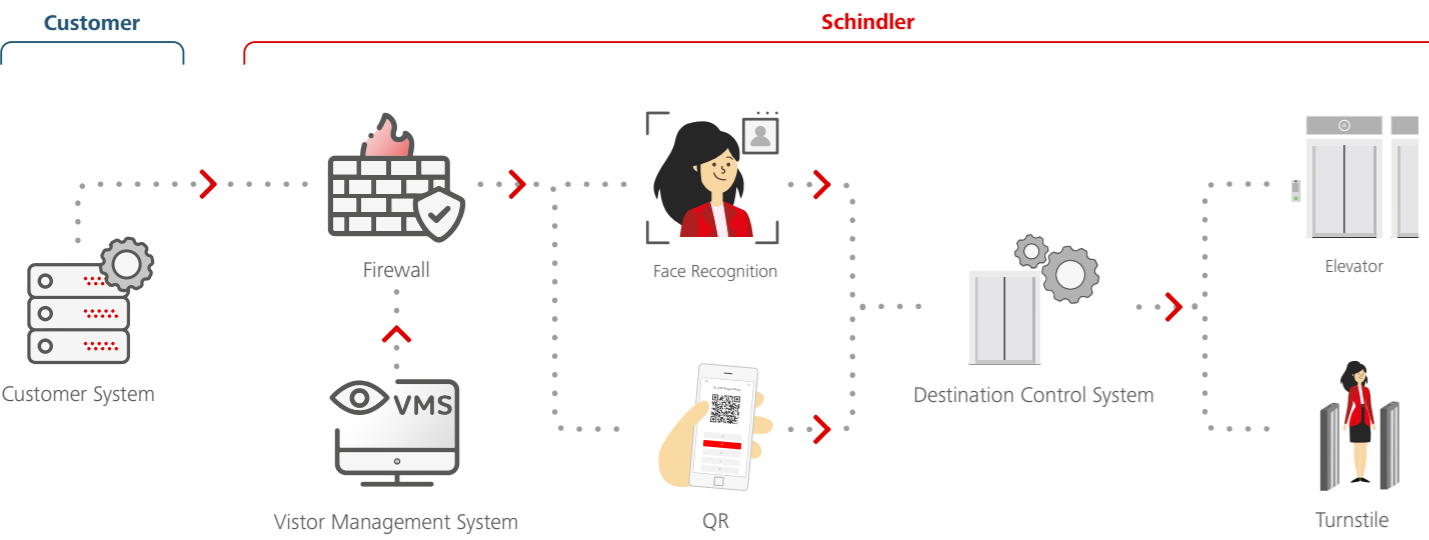
Living in the era of cloud computing services, personal data may seem vulnerable to a host of threats. To ensure the entire flow of data is leakage-free, the Built-In Facial Recognition and Visitor Management System relies on closed-loop data management with all biometric information encrypted and securely stored on the building's local server (i.e. Intranet). Furthermore, the application complies with all applicable data privacy laws and regulations.

### As data controller and processor

Biometric data would be collected by the building management for access control and would be store in an offline server onsite. The building owner and management will primarily control and process the data, and determine the purpose and means of the processing of the data.

### As data processor

With the written authorisation of the controller, the processing activity of the facial recognition system consists of the collection, storage and organization of those biometric data. The data is made available for the facial recognition system to recognise individuals for granting access and keeping time records.



# We are always close by.

Please contact one of the following addresses:

## **Brunei**

Schindler Liftec Sdn. Bhd.  
Level 7 (6th Flr), Setia Kenangan Complex  
Kg Kiulap Gadong BE1518, Bandar Seri Begawan  
Brunei Darussalam  
Telephone + 673 2 236 515  
+ 673 2 236 516  
Fax + 673 2 236 470  
info-bn@schindler.com

## **Cambodia**

Jardine Schindler (Cambodia) Ltd.  
Unit 706 and 707, 7th Floor, Exchange Square Building  
Nos. 19-20 Street 106, Village 2  
Sangkat Wat Phnom, Khan Daun Penh  
Phnom Penh City  
Kingdom of Cambodia  
Telephone + 855 23 901 288  
info@kh.schindler.com

## **Hong Kong**

Schindler Lifts (Hong Kong) Ltd.  
29th Floor, Devon House, Taikoo Place  
979 King's Road, Quarry Bay  
Hong Kong  
Telephone + 852 2516 8168  
Fax + 852 2516 6026  
info@hk.schindler.com

## **Indonesia**

P.T. Berca Schindler Lifts  
Jl. Puri Lingkar Luar, Blok P  
Puri Indah, Jakarta Barat 11610  
Indonesia  
Telephone + 62 21 8066 8222  
Fax + 62 21 2258 4521  
info@id.schindler.com  
Website www.schindler.co.id

## **Macau**

Jardine Schindler Lifts (Macao) Ltd.  
No. 398, Alameda Dr. Carlos, D Assumpcao Edificio CNAC  
9-andar-G & H, Macau  
Telephone + 853 2875 7953  
Fax + 853 2883 7264  
info@hk.schindler.com

## **Malaysia**

Antah Schindler Sdn Bhd (3837-H)  
8th Floor, Bangunan TH Uptown 3  
No. 3 Jalan SS 21/39, Damansara Uptown  
47400 Petaling Jaya, Selangor D Ehsan  
Malaysia  
Telephone + 60 3 7725 1818  
Fax + 60 3 7725 1181  
info.my@schindler.com  
Website www.schindler.my

## **Myanmar**

Myanmar Jardine Schindler Ltd.  
No 1/4, Parami Road, Hlaing Township  
Yangon, Myanmar  
Telephone + 95 1 654 855  
+ 95 1 654 356  
Fax + 95 1 654 854

## **Philippines**

Jardine Schindler Elevator Corporation  
20/F Tower 1, Insular Life Corporate Centre  
Insular Life Drive, Filinvest Corporate City  
Alabang 1781 Muntinlupa City, Philippines  
Telephone + 63 2 8683 6800  
Fax + 63 3 8802 3138  
info\_mkt.ph@schindler.com  
Website www.schindler.ph

## **Singapore**

Schindler Lifts (Singapore) Pte. Ltd.  
1 Kaki Bukit View No. #03-18/26, Techview  
Singapore 415941  
Telephone + 65 6854 7888  
Fax + 65 6846 2212  
info.sg@schindler.com  
Website www.schindler.sg

## **Taiwan**

Jardine Schindler Lifts Ltd.  
9th Floor, 35 Kwang Fu South Road  
Taipei 105, Taiwan, R.O.C.  
Telephone + 886 2 2528 6626  
Fax + 886 2 2528 6656  
info@tw.schindler.com  
Website www.schindler.tw

## **Thailand**

Jardine Schindler (Thai) Ltd.  
20th Floor, Times Square Building, 246 Sukhumvit Road  
Klongtoey, Bangkok 10110, Thailand  
Telephone + 66 2 685 1600  
Fax + 66 2 685 1601  
info.th@schindler.com  
Website www.schindler.co.th

## **Vietnam**

Schindler Vietnam Ltd.  
8th Floor, President Place, 93 Nguyen Du Street  
Ben Nghe Ward, District 1, Ho Chi Minh City, Vietnam  
Telephone + 84 28 3521 4890  
Fax + 84 28 3821 3382  
care.vn@schindler.com  
Website www.schindler.vn

Or visit our website:

[www.jardineschindler.com](http://www.jardineschindler.com)

This publication is for general informational purposes only and we reserve the right at any time to alter the services, product design and specifications. No statement contained in this publication shall be construed as a warranty or condition, expressed or implied, as to any service or product, its specifications, its fitness for any particular purpose, merchantability, quality or shall be interpreted as a term or condition of any service or purchase agreement for the products or services contained in this publication. Minor differences between printed and actual colors may exist.

**We Elevate**



**Schindler**